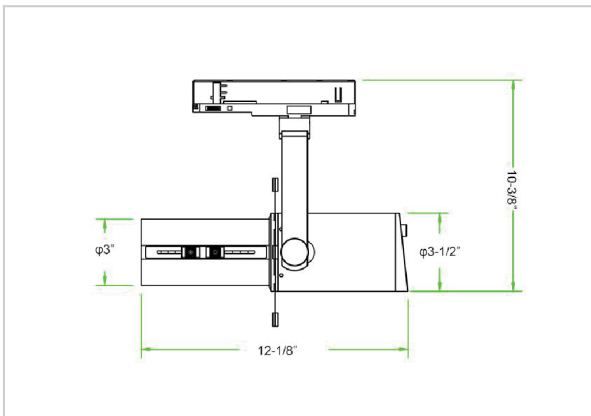


# Rimin Track Lights

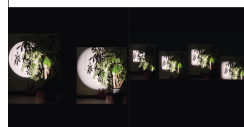
ITEM SKU#: 662187490977



## Product Code : IK-RRIMINTL-30W-27K-WH-90C-ADB

|                    |                              |
|--------------------|------------------------------|
| Voltage            | 100 - 277 V AC, 50-60 Hz     |
| Lumen Output       | 2100lm                       |
| Power              | 30W                          |
| Efficacy           | 140lm/w                      |
| CCT                | 2700K                        |
| CRI                | >90                          |
| Beam Angle         | 60°                          |
| Light Distribution | Flood                        |
| LED Light Source   | Osram SOLERIQ S 19           |
| Start Time         | Instant                      |
| Driver             | Stand Alone (included)       |
| Operating Position | Swiveling Type               |
| Dimming            | Triac Dimming, Local Dimming |
| Construction       | Track                        |
| Mounting Type      | Track Light Structure        |
| Heads              | Single Head                  |
| Finish             | White                        |
| Height             | 10-3/8"                      |
| Diameter           | 3"                           |
| Width (W)          | 12-1/8"                      |
| Application Area   | Indoor Applications          |

### Shapes (Narrow, Wide, Round, Square, and Other Shapes)



Rimin Projector Light is a versatile lighting solution designed for adaptability, aesthetics, and dynamic projection capabilities. It is 15° to 60° adjustable, which empowers you with tailored, precise illumination. In addition, the projection can be done in various shapes, such as round and square, allowing you to effortlessly create captivating visual displays.



## Technical Data

[Installation Instructions Link](#) ↓