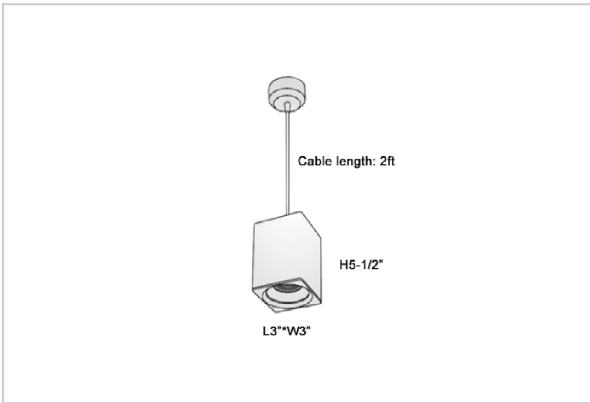
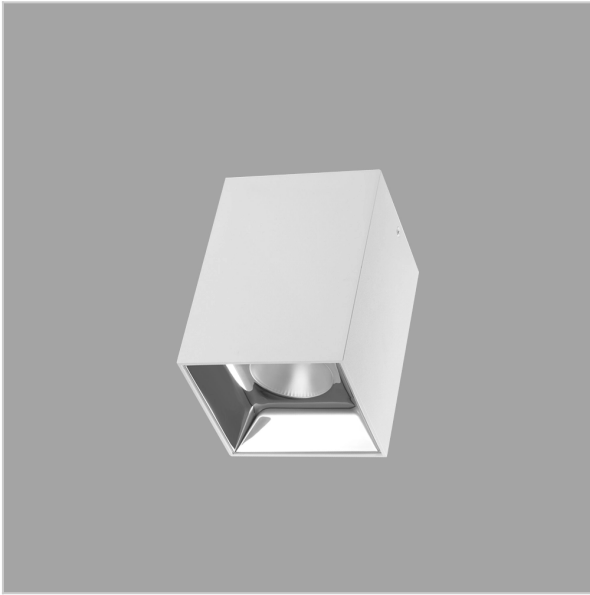


EOS Pendant Lights

ITEM SKU#: 662187505114



Product Code : IK-REosPL-8W-27K-WH-90C-45D

Voltage	100 - 277 V AC, 50-60 Hz
Lumen Output	640lm
Power	8W
CCT	2700K
CRI	>90
Beam Angle	45°
Light Distribution	Flood
LED Light Source	Osram SOLERIQ S 19
Start Time	Instant
Driver	Stand Alone (included)
Operating Position	No Swiveling Type
Dimming	Triac Dimming / 0-10 V Dimming
Heads	Single Head
Finish	White
Length	3"
Height	5-1/2"
Optics	Reflective Cup Structure
Width (W)	3"
Application Area	Guest Room, Restaurant, Meeting Room, Club, Hall, Hotel Entrance

Beam Spread (Options)

Spot	15°	Medium	30°	Flood	45°
ft	Ø	ft	Ø	ft	Ø
3.0	0.72	3.0	1.41	3.0	2.03
9.0	2.15	9.0	4.22	9.0	6.09
15.0	3.58	15.0	7.04	15.0	10.15

Eos is a technologically advanced LED Pendant Light that incorporates electronic gear and a high-quality lens with wide beam spread. While commonly used as task light, the unique and state-of-the-art design of this luminaire also enhances the overall aesthetics of your store.

